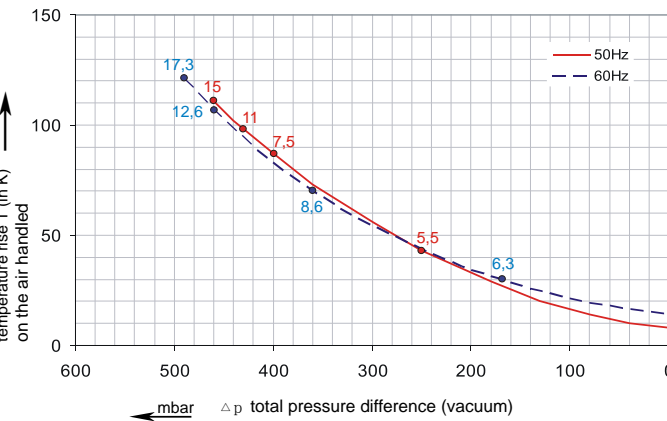
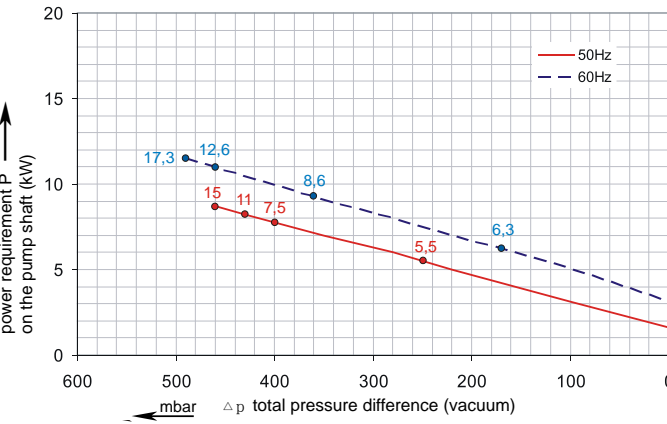
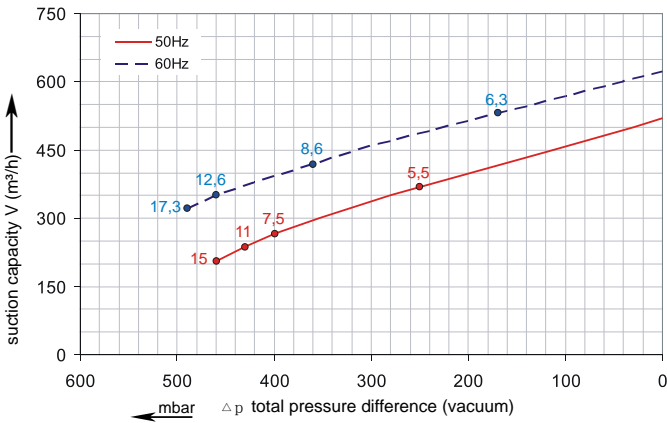
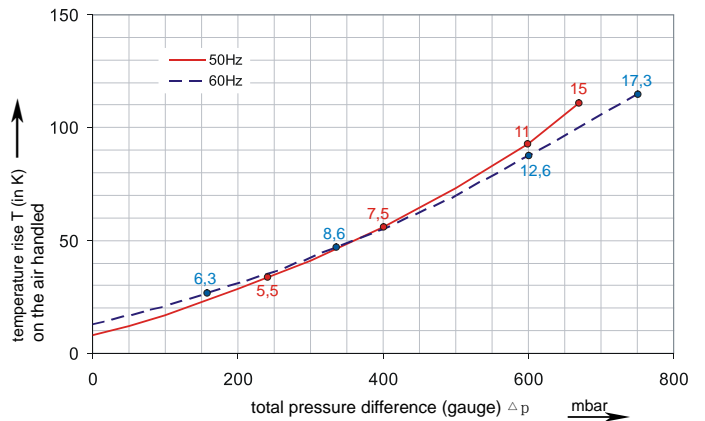
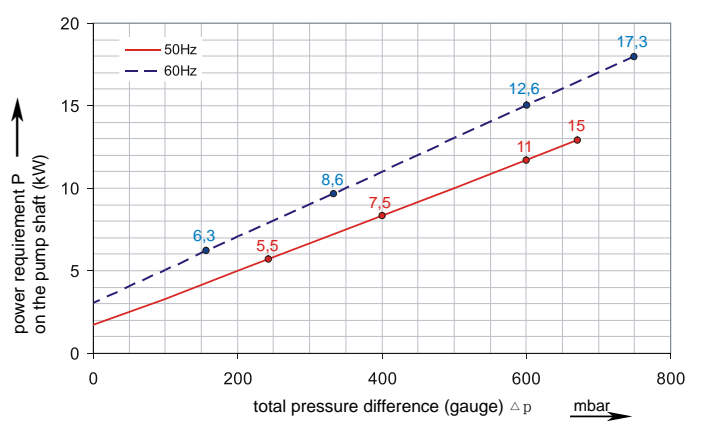
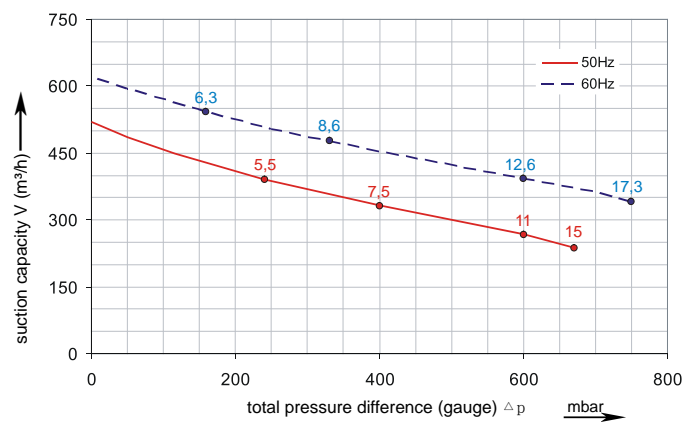


## Performance Curve for Vacuum



## Performance Curve for Pressure



The performance curves are based on air at a temperature of 15 °C and an atmospheric pressure of 1013 mbar with a tolerance of +/- 10 %. The total pressure differences are valid for suction and ambient temperatures up to 25 °C. For other conditions please confer with us.

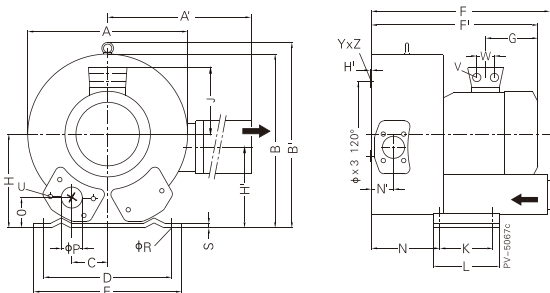
Each Proair Blower can be applied both as vacuum pump and compressor in continuous operation over the total stated performance curve range. The motors are available as standard for the input voltage range of 50 and 60 Hz and for protection category IP 55 as well as approved for UL and CSA.

## Selection and ordering data

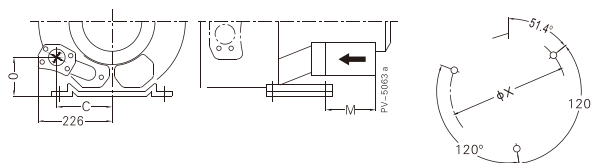
### A-8TD

Order No.	Fre- quency	Rated power	Input voltage		Input current		Permissible total differential pressure <sup>2)</sup>		Sound pressure level <sup>3)</sup>	Weight ca.
			Hz	kW	V	A	Vacuum mbar	Compressor mbar		
<b>3~ 50/60 Hz IP55 isulation material class F 1)</b>										
A8TD-217	50 60	5.5 6.3	345D ... 415D 380D ... 480D	600Y...720Y 660Y...720Y	13.3D 13.3D	7.7 7.7	-250 -170	240 160	74 78	83 83
A8TD-227	50 60	7.5 8.6	345D ... 415D 380D ... 480D	600Y...720Y 660Y...720Y	16.7D 17.3D	9.6 10.0	-400 -360	400 330	74 78	86 86
A8TD-237	50 60	11.0 12.6	345D ... 415D 380D ... 480D	600Y...720Y 660Y...720Y	28.0D 29.0D	16.2 16.7	-430 -460	600 600	74 78	104 104
A8TD-247	50 60	15.0 17.3	345D ... 415D 380D ... 480D	600Y...720Y 660Y...720Y	32.5D 34.5D	18.8 19.9	-460 -490	675 750	74 78	120 120

A8TD-217, A8TD-227



A8TD-237, A8TD-247



	A	A'	B	B'	C	D	E	F	F'	G	H	H'	J	K	L	M	N	N'	O	φP	φR	S	V	W	φX	YxZ	X - Holes	
A8TD-217	3~	500	549	490	509	76	356	394	545	589	226	240	199	148	170	217	-	236	84	65	G21/2	15	6	4xM32x1.5	42	286	M12x20	51.4°/120°/240°
A8TD-227	3~	500	549	490	509	76	356	394	545	589	226	240	199	148	170	217	-	236	84	65	G21/2	15	6	4xM32x1.5	42	286	M12x20	51.4°/120°/240°
A8TD-237	3~	500	549	490	509	76	356	394	545	694	318	240	199	197	170	217	-	212	84	105	G21/2	15	6	4xM40x1.5	54	286	M12x20	51.4°/120°/240°
A8TD-247	3~	500	549	490	509	152	356	394	545	694	318	240	199	197	170	217	-	212	84	105	G21/2	15	6	4xM40x1.5	54	286	M12x20	51.4°/120°/240°



#### Other voltage ranges

#### A-8TD □ □

50Hz	60Hz	
3~		
185...225 V D/320...390 V Y	200...240 V D/345...415 V Y	2 1
200...240 V D/345...415 V Y	200...275 V D/380...480 V Y	2 6
345...415 V D	380...480 V D	2 7
500 V D	575 V D	C 5

Machines according to the ATEX norm 94/4 EG are available for the whole performance range.

Following types available: Category 3 G, 3/2 G, 3 D and 3/2 D.

Further voltage range on request; please quote in plain text.

Proair Blowers achieve the standards and norms of the low voltage directive (LVD)2006/95/EC, rotating electrotechnical motor EN 60034-1-2004, electromagnetic compatibility(EMC)EN55014-1/2,EN61000-2/-3/-4/-6.

- 1) For standard UL for ELECTRIC MOTOR UL 1004-1.
- 2) Relief-valve are available for limiting differential pressure.
- 3) Measuring-surface sound-pressure level acc. to DIN EN 21680, measured at a distance of 1 m. The pump is throttled to an average suction pressure, a hose is connected to the discharge side (compressor) / suction side (vacuum pump), but is not fitted with relief valves.

The motors are designed according to the DIN EN 60 034 / DIN IEC 34-1 and temperature class F.

For the three phase machines the tolerances are +/- 10 % for fixed voltage and +/- 5 % for voltage range.

The single phase machines are designed with a +/- 5 % tolerances. If only 90 % of the maximum allowed pressure will be used for the continuous operating then the allowed voltage range add to +/- 10 %.

For all single and three phase machines which designed according to the UL and CSA norm (UL 1004-1) the maximum allowed voltage tolerances are - 10 % resp. + 6 %.

The frequency tolerance is maximum +/- 2 %.

Changes in particular the quoted performance curve, datas and weights without prior notice. The figures are without obligations.

03.2015